



# Quick Start Guide - HARDWARE



Power Homepage

OLED Display

Rotary Control:  
- Turn to Browse  
- Quick press to Select  
- Long press to Go Back

Headphone  
Jacks

ADAT/SPDIF AES/EBU Secondary  
Ethernet port



Wordclock Input Wordclock Output Sync Primary Ethernet port Ravenna/AES67

Expansion Slot 1

Expansion Slot 2

DC Power (Optional) AC Power



© 2021 Merging Technologies. All rights reserved.





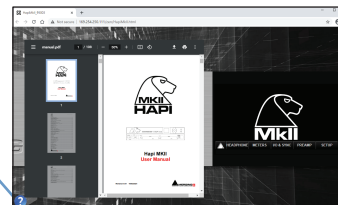
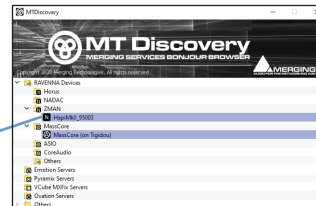
# Quick Start Guide - SOFTWARE

## Installation

- 1) Download the appropriate driver for Hapi MkII on [www.merging.com/hapi](http://www.merging.com/hapi)
    - \* On Windows: Pyramix MassCore or the Merging Audio Device (MAD)
    - \* On MacOS: RAVENNA Virtual Audio Device (VAD-Core Audio)
  - 2) Follow the instructions to install the software
  - 3) Connect the power cord to the AC power connector of Hapi
  - 4) Plug one end of a Cat5e or Cat6 Ethernet cable to the Primary Ethernet port of Hapi
  - 5) Plug the other end of the Ethernet cable to your computer
- Note: An Ethernet Gigabit switch may be used between Hapi and the computer to connect other RAVENNA devices to the same network*
- 6) Turn on Hapi using the front panel power button
  - 7) Wait until Hapi has started up
- Note: Configuration sequence can be followed on the OLED display*
- 8) Hapi is ready to operate

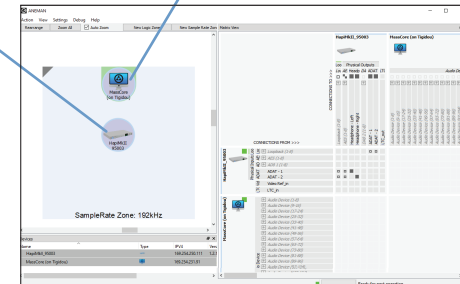
## Open the embedded documentation

- 1) Turn on Hapi as described in the «Installation» section
  - 2) On your computer launch MTDIScovery or ANEMAN to find your Hapi on the network
  - 3) Locate your Hapi in the list of discovered devices
  - 4) Double-click on it to open the Web Access
  - 5) Your default Web browser will start and the Hapi Web Access will open up
  - 6) Open the embedded User Manual by clicking on the «?» button on the bottom left corner of the Web browser
- Note: No internet access required, the proper documentation matching your firmware version is always embedded in your Hapi*



## Use Hapi in a RAVENNA network

- 1) Connect the Hapi to a RAVENNA network using a Cat5e or Cat6 cable
- 2) Power up Hapi
- 3) On a computer running either Pyramix MassCore, RAVENNA ASIO driver, Merging Audio Device (MAD) or the Merging RAVENNA Virtual Audio Device (VAD - Core Audio)
- 4) Download ANEMAN from [www.merging.com/aneman](http://www.merging.com/aneman) and launch ANEMAN
- 5) The Hapi will be discovered in the ANEMAN world view
- 6) Once your application is running our driver or MassCore should be available for RAVENNA connections from/to the Hapi. Refer to the ANEMAN Manual for more details.



- 7) In your preferred DAW, connect the available I/O within its mixer
- Note: Create an ANEMAN sampling rate zone in order for all the Merging RAVENNA devices to follow the sampling rate.*

## Firmware upgrade

- 1) Check for new firmware in the «Docs & Downloads» section at [www.merging.com/hapi](http://www.merging.com/hapi)
- 2) Right click on the Hapi from MTDIScovery or ANEMAN and select «Maintenance Page»  
*Google Chrome is the recommended browser*
- 3) Do not abort the Firmware Update at anytime, until completion and «Reboot» message  
*Merging Technologies recommends to update to the latest available firmware.*  
*All details on the upgrade procedure can be found in the Hapi MkII User manual.*

